

ODOT - COLUMBUS STATE COMMUNITY COLLEGE

Construction Inspection Workforce Program

READY TO GET STARTED?

To apply for admissions at Columbus state, complete an online application at www.csc.edu/apply.
Columbus State Community College Admissions
Columbus Campus – Madison Hall, lower level
614-287-2669
Delaware Campus – Moeller Hall
740-203-8345

FOR FINANCIAL AID ASSISTANCE:

Visit the Office of Financial Aid's website at
<http://www.csc.edu/services/financial-aid>

For more information on the
**ODOT - COLUMBUS STATE
COMMUNITY COLLEGE
Construction Inspection
Workforce Program (CIWP):**

Visit our program's website at
www.csc.edu/CIWP

Surveying Coordinator:

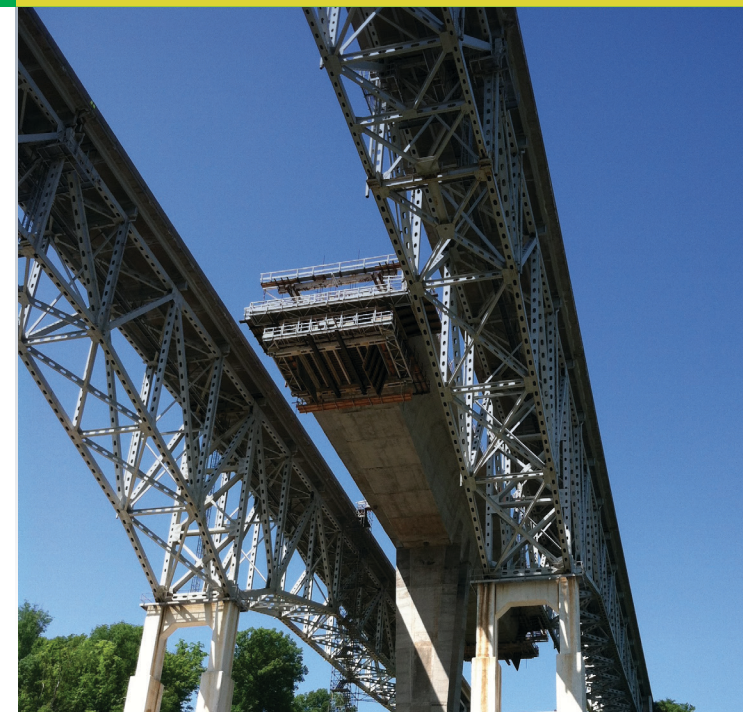
Jon Link, P.S.
jlink@csc.edu • 614-287-5949

Advisors:

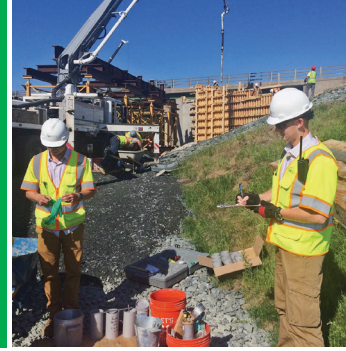
Nichole Braun, Ph.D
nbraun@csc.edu • 614-287-5692

Allison Deverteuil, M.S.E.
adeverte@csc.edu • 614-287-2832

Email your questions to construct@csc.edu
or call **614-287-5034**



ODOT - COLUMBUS STATE COMMUNITY COLLEGE CONSTRUCTION INSPECTION WORKFORCE PROGRAM (CIWP)



The Construction Workforce Inspection Program provides a basis for entry-level employment as a transportation Construction Inspector. The Program includes three components – College Coursework, Certifications and a Formal Internship on ODOT related Projects.

The Program includes:

- College Coursework of 36 credit hours in Civil Engineering Technology, Surveying, and Construction Management
- National Institute for Certification in Engineering Technologies (NICET) Highway Construction Levels I & II Certification preparation
- American Concrete Institute (ACI) Level I Concrete Field Testing Technician – Grade I Certification
- Ohio Aggregate Level I Certification
- Tests for Flexible Pavement and Traffic Work Zone Safety
- 12 Month Formal Internship on ODOT related projects

Program graduates are prepared to work for ODOT prequalified consulting companies on ODOT related projects that include state, federal or local funding.

SALARIES

Starting to 5 years experience \$46,000 - \$50,000

Upon completion of the the Construction Inspection Workforce Program, the graduate will be able to:

- Inspect construction projects to ensure contractor compliance with specifications, plans, standards and/or proposals for roadway work, roadway, drainage, pavement, water works, electrical, maintenance of traffic, traffic work zone, pavement markings, traffic control, signing, demolition and clearing, foundations for embankment, sub-grades, guardrails and/or median barriers, landscaping, slope protection, detours, etc.
- Perform on-site testing of concrete, soil and asphalt compaction; collect samples of aggregates, tack coat, topsoil, seed, etc.
- Verify plan quantities and calculations with as bid plans.
- Prepare and maintain project records and reports including daily diaries, inspection reports, pay item quantities, contractors construction methods, material testing & inspection.
- Notify the Contractor of non-conforming work.
- Perform data entry into construction management systems.
- Perform quantity takeoffs and estimates for work completed to compare with contractor pay requests.
- Assess work zone traffic setups for conformance to plans, specifications and standards to maintain safety in work zones.

CONTINUE YOUR EDUCATION

Degrees Include:

- Associate of Applied Science in Civil Engineering Technology
- Associate of Applied Science in Surveying
- Associate on Applied Science in Construction Management

CONTINUE YOUR OPPORTUNITIES

- Project Structure Inspector – Additional 40 Months Experience & National Institute for Certification in Engineering Technologies (NICET) Highway Construction Level III
- With additional certifications and internships, opportunities as a Coatings Inspector, Traffic Signal and Lighting Inspector, Soils and Aggregate Inspector

In cooperation with



ACEC

AMERICAN COUNCIL OF ENGINEERING COMPANIES
of Ohio